

AsbestoKote BROCHURE

Kote[®]
Working for our customers success!

AsbestoKote

ASBESTOS ENCAPSULATION COATING

AsbestoKote has been specifically formulated to bind the surface fibers in asbestos products and roof sheeting in particular.

The product is UV stable and flexible with outstanding hydrophobic characteristics. It has exceptional adhesion strength to most substrates. Fully scrubbable.

This is an environmentally friendly formulation and is well below VOC requirements and is water based, pure acrylic. After application as per the below instructions, a smooth, transparent coating will encapsulate the surface with the advantages of safety, self-cleaning, waterproof, UV stable and remarkable resistance to any new growth of algae and lichen fungus.

The life expectancy is well beyond ten years in the absence of physical damage from severe hail, or human interference.



DANGER

CONTAINS ASBESTOS FIBERS
AVOID CREATING DUST

LUNG DISEASE AND CANCER HAZARD

Dangerous Asbestos

WHY IS IT SO DANGEROUS?



The reason for the danger is these barbed fibers that pierce the lung tissue and can cause lung disease such as cancer and other nasty terminal sicknesses.

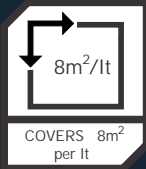
There is no cure for this type of disease and it is a horrible way to die.

These fibers become airborne when the asbestos sheeting becomes degraded and or subjected to disturbance such as drilling, high pressure cleaning, or breakage and improper removal procedures.

The older these sheets are the more brittle and subject to breakage they become. Not many people are aware of these risks, nor do many contractors know how to treat this danger. It is now a matter of concern for all of us to know this and act.

AsbestoKote

THE BREAKDOWN OF ASBESTOKOTE AND ITS PROTOCOLS

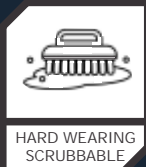


SPREADRATE/COVERAGE

AsbestoKote covers about 8 square meters per liter per coat

*You need to apply a minimum of 3 coats

*First coat is diluted with 10% of water, the next two coats are neat
Please measure correctly, corrugations can add more than 30% to the width!



SELF CLEANING

This clear product is scrubbable and 100% self cleaning making it easy to maintain both indoor and outdoors



PROTOCOL

The AsbestoKote product will only be effective if you apply no less than 3 coats. You can apply each coat 1 hour apart in good warm weather



THE TOOLS

AsbestoKote is a water based product, meaning the only liquid you need to clean your paintbrush, roller or spray machine is water



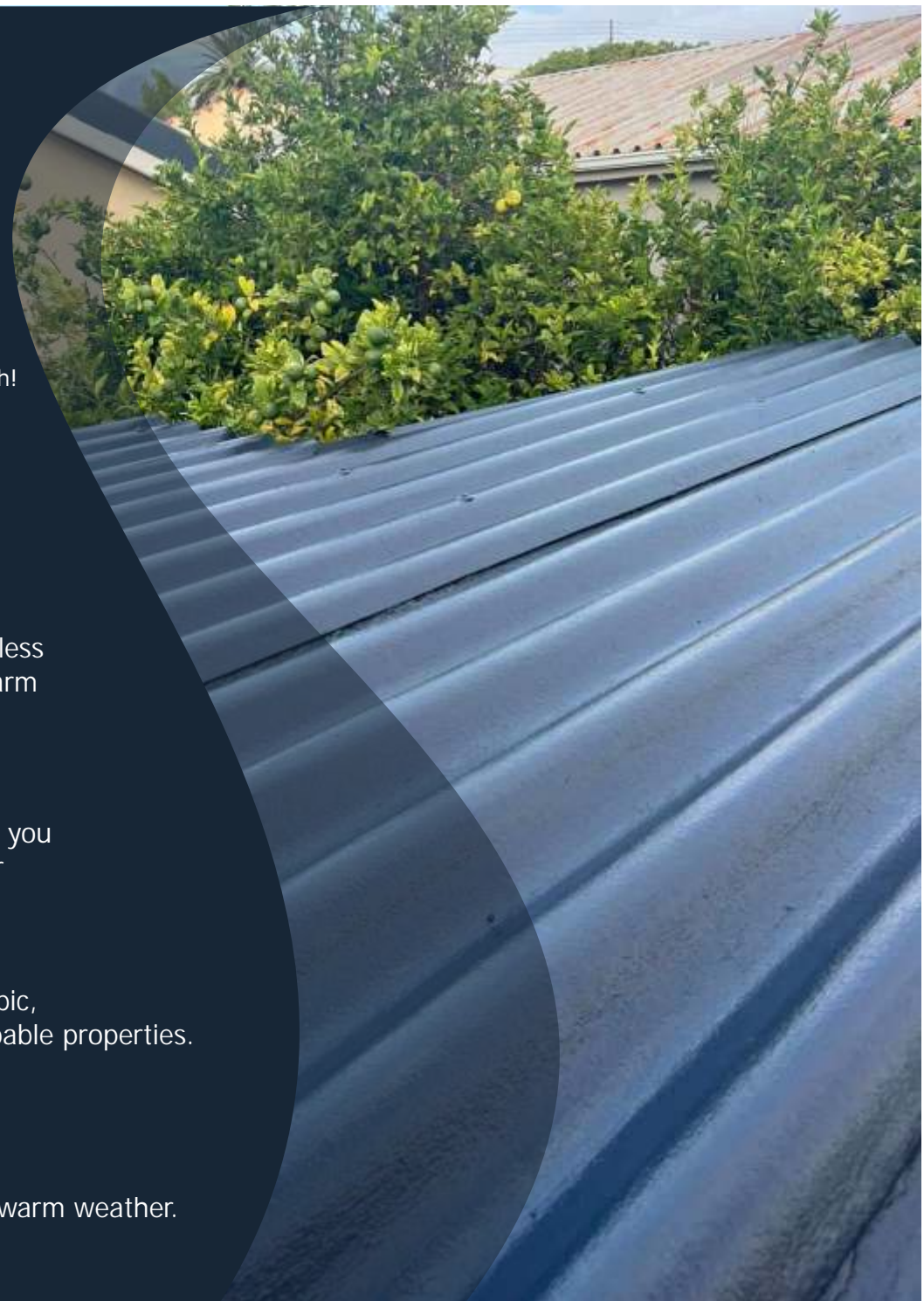
PROPERTIES OF ASBESTOKOTE

AsbestoKote is an eco-friendly, UV Stable, VOC free, hydrophobic, flexible, resistance to heat, has incredible adhesion and scrubbable properties.



CURING AND DRYING TIMES

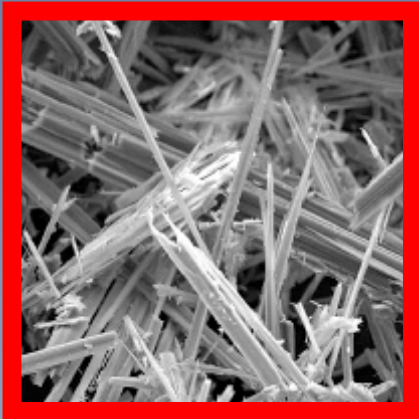
AsbestoKote requires warmer sunny weather in order to dry and cure. Drying time between coats is 30 mins to 1 hr in warm weather.
As with all coatings full cure in 7 days.



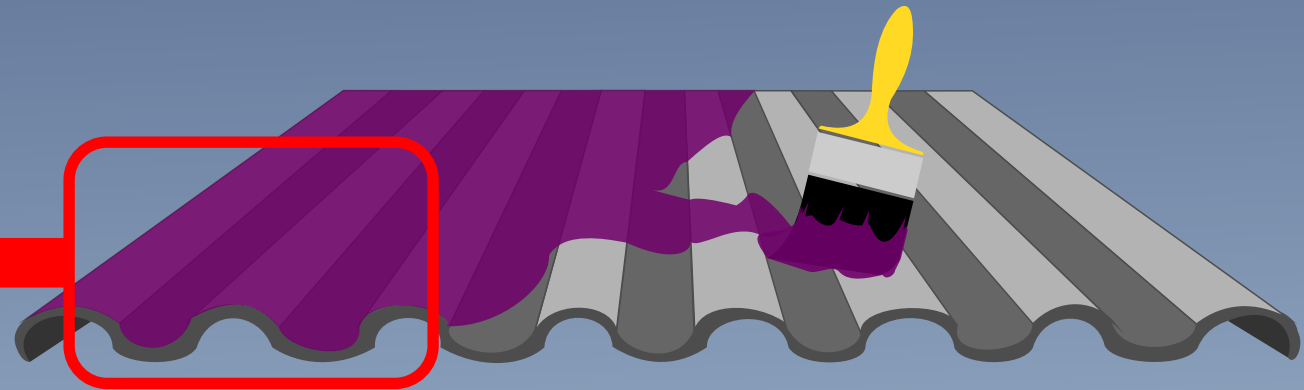
AsbestoKote

CLOSE UP OF THE COATING

Uncoated & Unprotected



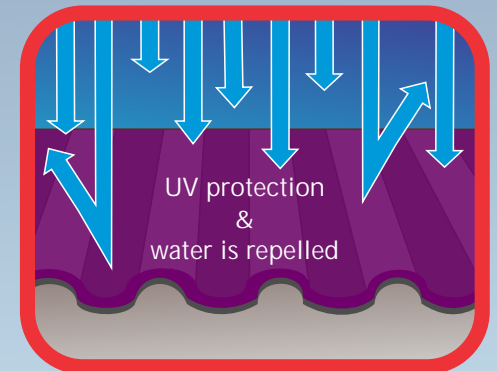
Fibers are bound together tightly at microscopic levels



WHAT ASBESTOKOTE DOES

Putting it simply, AsbestoKote encapsulates the asbestos fibers, essentially gluing them together so they cannot breakdown any further and cause irreversible harm to you, your family, your neighbours or your workers.

With the first layer, you mix the AsbestoKote with 10% of water to penetrate the surface, creating long talon-like tendrils to seep into the crevices of the asbestos and a deep 'gluing' action to hold everything together. The following two coats are applied neat, creating a proper seal from the UV rays and rain, the elements, that break down asbestos.



After encapsulation the water is repelled away, keeping the asbestos fibers locked together safely



Protection from the Elements

PROTECT YOURSELF FROM HARM

AsbestoKote is a high quality acrylic based coating that is eco-friendly, water-based, UV stable and has a gorgeous gloss finish.

This coating protects the asbestos sheeting from degrading further and causing harm to you and your family.

AsbestoKote

SURFACE PREPARATION AND INSTRUCTIONS

The correct preparation of the substrate is vital to the success of AsbestoKote and its efficacy. If you do not follow these steps you are gambling with your money and time. You are also bound to have a failure in the application of the product or other consequences because of negligence.

You are strongly advised to follow the law and its guidelines as to cleaning procedures!

1. Make sure your surface is well inspected and repair any cracks or hollow areas where water may stand for long periods. You can do this by mixing fine clean sand with any of our binders into a paste and trowel into the cracks or over the hollows.

Leave this to dry well for a couple of hours or so, depending on the weather.

2. If there is loose material or sandy moss remove them and brush away or vacuum preferably.

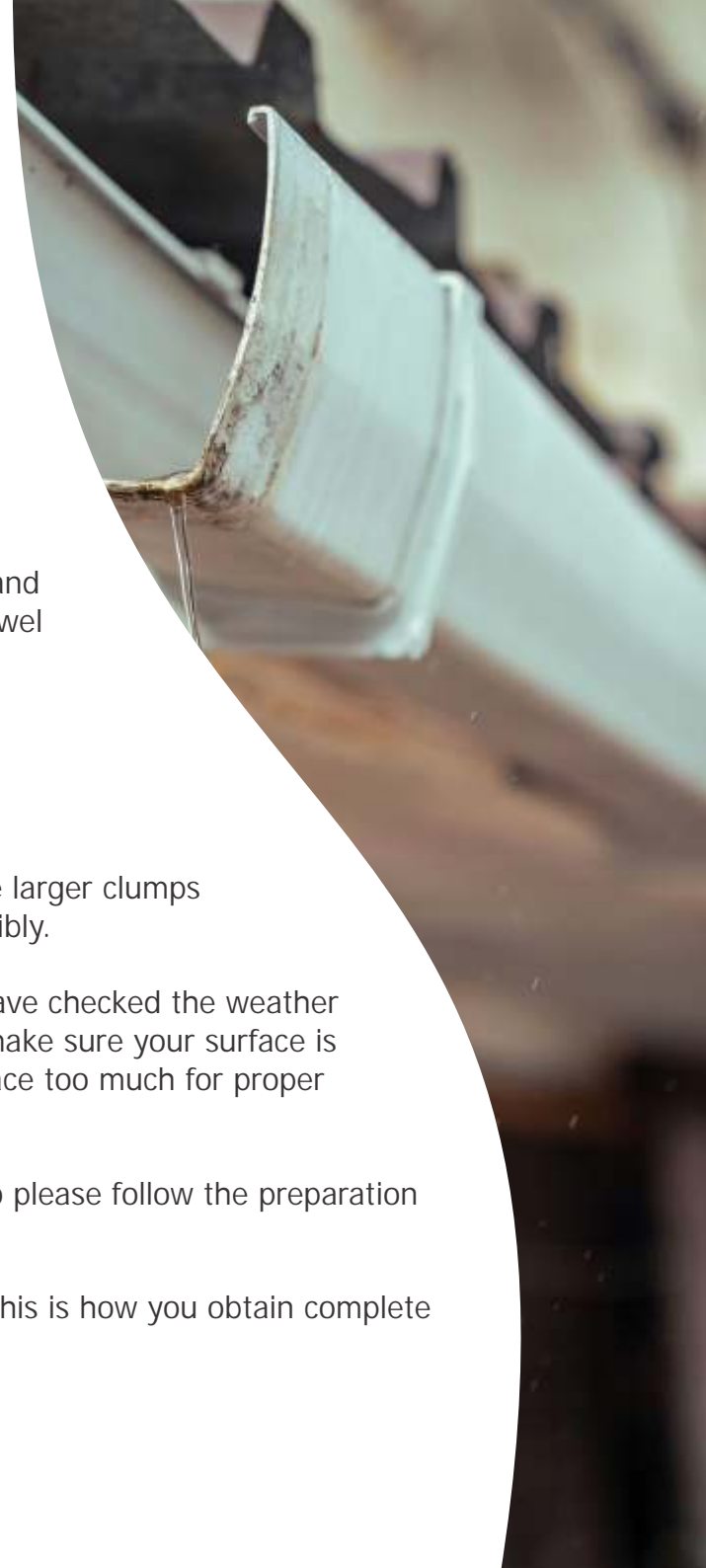
DO NOT SANDPAPER YOUR ASBESTOS!

3. If necessary you can use a garden hose to replicate a gentle rain on your roof, this can help remove larger clumps of dirt. Make sure to put a net in your drain pipe to catch all the debris and discard safely and responsibly.

4. Before you begin the first steps of application as described on the next page, make sure that you have checked the weather forecast to ensure you don't have any surprise rainstorms within the curing period. Also you need to make sure your surface is not overly hot, which means you will begin coating in the early morning before the sun heats the surface too much for proper penetration to occur. The aim is for penetration and not a race to quick drying!

If the surface is too hot, AsbestoKote will dry too early and you will experience bonding issues later, so please follow the preparation guidelines religiously.

5. AsbestoKote can be quite forgiving and easy to use if you work within the parameters that we set, this is how you obtain complete success in the application of any product.



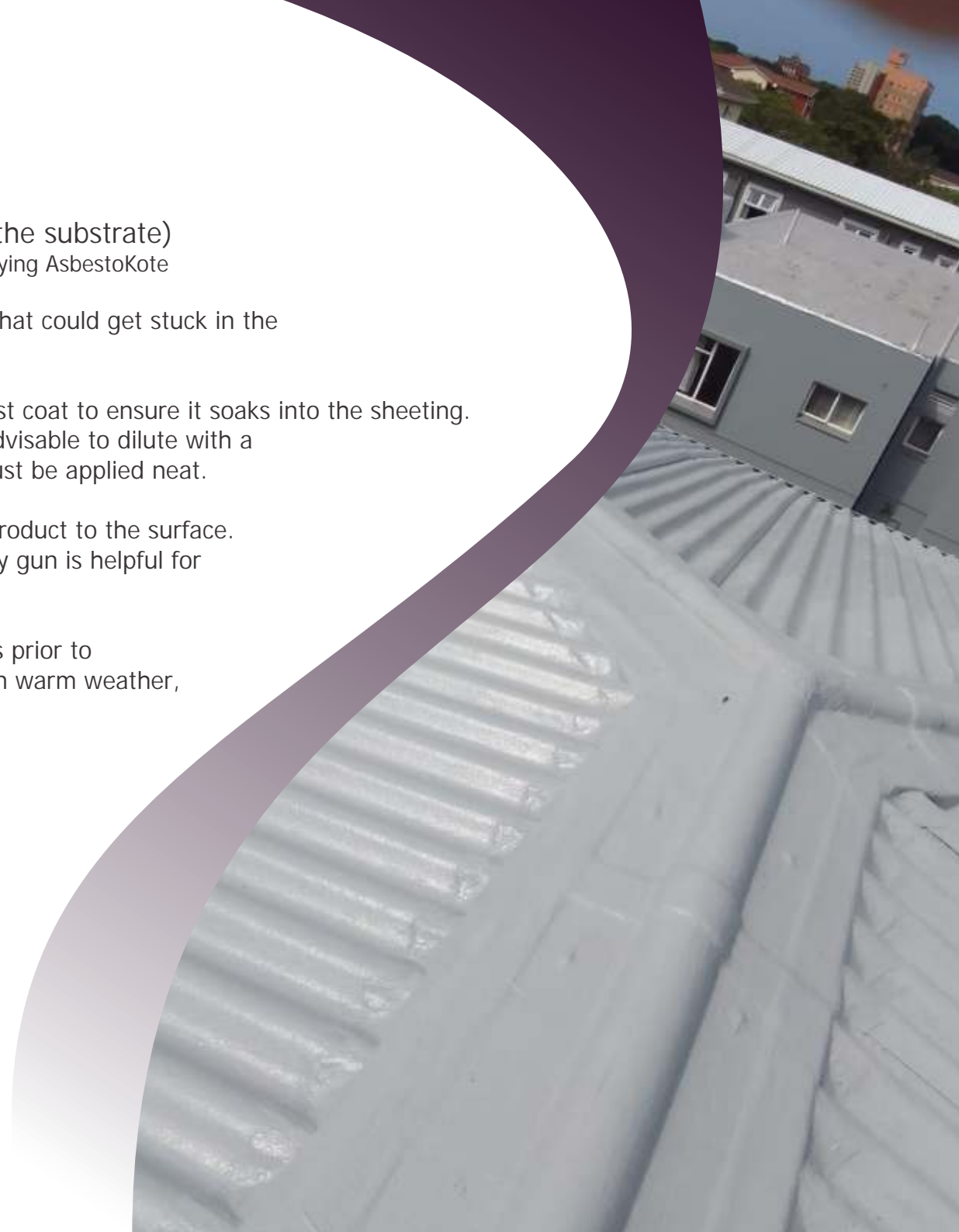
AsbestoKote

INSTRUCTIONS

AsbestoKote must be applied as follows: (depending on the substrate)

*Make sure you follow the Surface Preparations instructions before applying AsbestoKote

1. Make sure that the surface doesn't have any dust or particles that could get stuck in the coating and leave an 'embossed' finish because of it.
2. Take a paintbrush or airless spray gun and apply a generous first coat to ensure it soaks into the sheeting. You want the first coat to penetrate and to assist in this it is advisable to dilute with a small amount of water, about 10%. The following two coats must be applied neat.
3. You can use a paintbrush or an airless spray gun to apply the product to the surface. The paintbrush is great for smaller areas whilst the airless spray gun is helpful for the larger areas that need to be coated.
4. Be sure to do this work in good weather and at least three days prior to any expected rain. Although AsbestoKote dries in a few hours in warm weather, it will take 7 days to cure fully.
So the longer you can have no rain to disrupt the curing process the better.
5. Whilst we suggest applying three coats we do acknowledge that some areas need more coats than others so be sure to do a test patch before full application.
6. AsbestoKote is not a 'paint' it is a protective encapsulating coating and needs to be applied with this in mind. Make sure the surface isn't too hot as this will cause the adhesion to be affected.



What could go wrong?

ITS IMPORTANT TO BE INFORMED

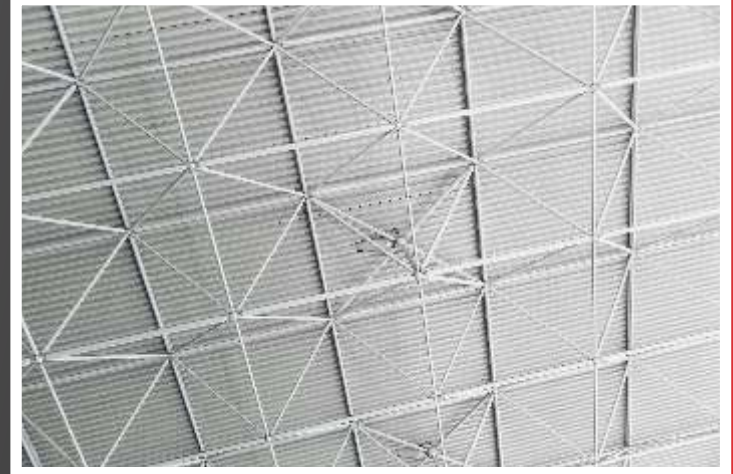


AsbestoKote can be abused in the following ways which could prove to be costly to you.

1. Application: If the surface is too hot then AsbestoKote cannot get a grip on the surface and you will have peeling.
2. The product itself: If you do not allow for each coat to dry thoroughly before the next application you will get drag marks if using a paintbrush. Also keep in mind that if it rains soon after being applied then the product is being diluted and it will not perform as promised. Therefore it is imperative to apply in good weather and a few days prior to rain.
3. Your expectations are not met: Decide what it is you are wanting from the protective coating! This is probably the most important, do not expect to get the same amount of protection with 2 coats of product as you will with 4 coats. The more you apply the more protection you will get.
4. Drying time: It will take longer to dry in cold or damp weather. Also be aware of falling dew at night, so stop applying the product early in the day so as to avoid dilution of your coating. It is strongly advised to apply three or four generous coats rather than one or two heavy and thick coats. This is an atmospheric drying or evaporating drying water-based coating so please use common sense when gauging the weather conditions.
5. Damaged surfaces: It is important to make sure any surface you want to encapsulate is diagnosed properly, cracks are mended, nails are waterproofed and sheets are not so degraded that they actually need to be replaced because they are not safe to work on. You don't want to have a lawsuit if a worker falls through an unsafe roof.

AsbestoKote

PROTECTION AGAINST ASBESTOS FIBERS



Asbestos can be found in many different places. Most common are roofs, fascia boards and gutters but that is only a few mostly found products of asbestos. You should always be vigilant and wary of anything that you suspect could be asbestos and take the necessary precautions to safeguard your life and those of your loved ones.



AsbestoKote are products manufactured by Kote Products (Pty) Ltd

Find more information about AsbestoKote and other Kote Products on our website
or feel free to get in touch via email or simply call

www.kote.co.za - 0312616866

Technical Advice: dave@kote.co.za

Admin: kels@kote.co.za

Kote®

Working for our customers success!